

MISSOURI
DEPARTMENT OF
NATURAL RESOURCES

Michael L. Parson
Governor

Dru Buntin
Director

March 17, 2023

The Honorable Samuel B. Graves
United States Congress
1135 Longworth House Office Building
Washington, D.C. 20515

Dear Congressman Graves:

I am writing to express my support for the Atchison County Flood Mitigation Resiliency Project. The proposed project would add flood resiliency to the area, provide environmental benefits, and reduce operation and maintenance costs for the districts.

Federal funding received for the project would allow for the Northwest Missouri Regional Council of Governments to carry out the following, in coordination with the Mill Creek and Nishnabotna Drainage Districts, the Northwest Atchison County Levee District, and Atchison County Levee District #1:

- Replace three pumps damaged during the 2019 flood;
- Relocate the three pumps to new locations to provide better drainage of the watershed and remove water to the riverside of the new L-536 Partial Levee Setback;
- Install power lines to the drainage ditches 3, 5, and 7 in the drainage districts to power the new electric pumps;
- Pay for engineering costs associated with schematic drawings and the environmental review process necessary to obtain the required Section 408 permits from the U.S. Army Corps of Engineers;
- Slip-line the drainage for ditch 6; and
- Acquisition of 677 acres of land for the L-550 setback.

This proposed project will allow the levee and drainage districts to provide greater flood resiliency to citizens of Atchison County, protected by the L-536 Levee, L-550, and Hamburg Levee. In addition, Mill Creek and Nishnabotna Drainage Districts switching to electric pumps will increase efficiency in several ways: energy costs will be reduced, pumps can be monitored remotely, and pumps will require less maintenance. The electric pumps will provide environmental benefits by reducing carbon emissions. The drainage districts will be able to provide an increased level of safety to their board members and staff that currently must refuel the pumps during a flooding event. Furthermore, this project will support slip-lining of the drainage for ditch 6, which provides drainage for the Hamburg levee system. Finally, this project will support the acquisition of 677 acres of land critical to the L-550 setback.



Congressman Samuel B. Graves
Page 2

I am happy to provide my endorsement and support for the Atchison County Flood Mitigation Resiliency Project. Please let us know if you need any additional information or detail. I can be contacted by telephone at 573-522-6221 or via email at dru.buntin@dnr.mo.gov.

Sincerely,

A handwritten signature in black ink, appearing to read "Dru Buntin". The signature is fluid and cursive, with the first name "Dru" and last name "Buntin" clearly distinguishable.

Dru Buntin
Director



101 W. Mill St., PO Box 82
Rock Port, MO 64482
www.acdlevee.com

March 20, 2023

Congressman Sam Graves
1135 Longworth HOB
Washington, DC 20515
United States

Dear Congressman Graves:

I am writing to express my support for both the Mill Creek and Nishnabotna Drainage Districts and the NW Atchison Levee District Community Funded Project requests. These proposed projects would add flood resiliency to the area, provide environmental benefits and reduce operation and maintenance costs for the districts.

The funding request for the Mill Creek and Nishnabotna Drainage Districts would allow them to carry out the following:

- Replace three pumps damaged during the 2019 flood;
- Relocate the three pumps to new locations to provide better drainage of the watershed and remove water to the riverside of the new L-536 Partial Levee Setback;
- Install power lines to the drainage ditches 3, 5, and 7 in the drainage districts to power the new electric pumps; and
- To pay for engineering costs associated with schematic drawing and environmental review process necessary to obtain the required Section 408 permits from the U.S. Army Corps of Engineers.

This proposed project will allow the drainage districts to provide greater flood resiliency to citizens of Atchison and Holt Counties, protected by the L-536 Levee and the Mill Creek and Nishnabotna Drainage Districts. In addition, the drainage districts will also see reduced operation and maintenance costs by switching to electric pumps as energy costs will be reduced, pumps can be monitored remotely, and require less maintenance. The electric pumps will provide environmental benefits by reducing carbon emissions. The drainage districts will be able to provide an increased level of safety to their board members and staff that currently must refuel the pumps during a flooding event.

The proposed project for the NW Atchison Levee District would be for slip lining of their drainage pipes from the Hamburg levee. This will provide much needed durability to the overall levee system for it to be better prepared for future floods.

It is for these reasons that the Atchison County Levee District #1 provides our endorsement for both the Mill Creek and Nishnabotna Drainage District-Phase III Community Funded Project request and the NW Atchison Levee District request.

Respectfully,

Regan Griffin
Atchison County Levee District #1 Board Member



101 W. Mill St, PO Box 82
Rock Port, MO 64482
www.acldlevee.com

March 20, 2023

Congressman Sam Graves
1135 Longworth HOB
Washington, DC 20515
United States

Dear Congressman Graves:

I am writing on behalf of the Atchison County Levee District No. 1 (ACLD) to request funding for the purchase of a 667 +/- acre tract of land just north of US Highway 136 in Atchison County, Missouri. This tract is vital in our pursuit of a setback for the L-550 levee system.

Our board has been pursuing a setback of L-550 since the 2019 flood. Every major flood event that has taken place since 1993 has seen a breach in the levee north of US Hwy 136 as the bridge acts a major pinch point in this section of the Missouri River. We believe a setback at the bridge would significantly alleviate this issue and provide more resilience for our levees and protection for farms on the Missouri River bottom.

We have already been in contact concerning this project with USACE and the Missouri Department of Transportation (MODOT) as both would be key partners in making the L-550 setback happen. USACE is currently conducting a lower Missouri River basin study to look more closely at pinch point areas and a spinoff study of this area looks very likely. This study would provide the Corps the data and modeling needed to make recommendations for a long term fix of the area which would likely include a setback. Additionally we have been working with MODOT to ensure any planned work on the 136 bridge would be in conjunction with the new levee design.

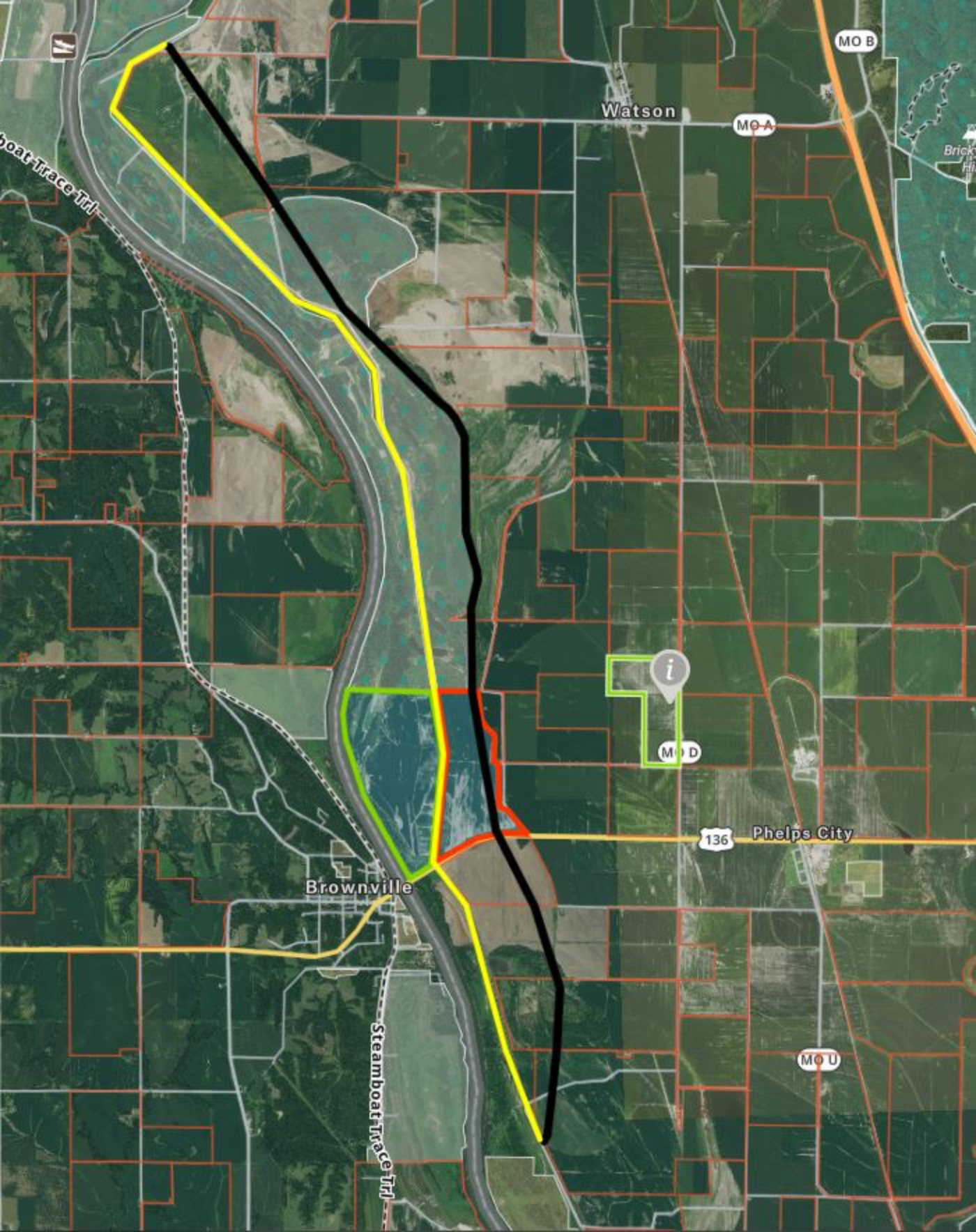
The acquisition of this tract would be a major step in making this project a reality. It is for these reasons that the Atchison County Levee District No. 1 is requesting a line item appropriation for money to acquire this key ground.

Attached to this email are two maps showing the tract of land. The first is a map showing an approximation of the entire L-550 setback with the current levee in yellow and the estimated setback levee location in black. The second map is a closeup of the ground we are pursuing at the Brownville bridge. Please feel free to contact me at (660) 253-0830 with any questions or additional information you may need concerning this piece of ground. Thank you.

Respectfully,

A handwritten signature in blue ink, appearing to read "Regan Griffin", is written over a light blue circular stamp.

Regan Griffin
Atchison County Levee District #1 Board Member



MO B

Watson

MO A

Boat-Trace Trl

Brick Hill

Brownville

Steamboat Trace Trl

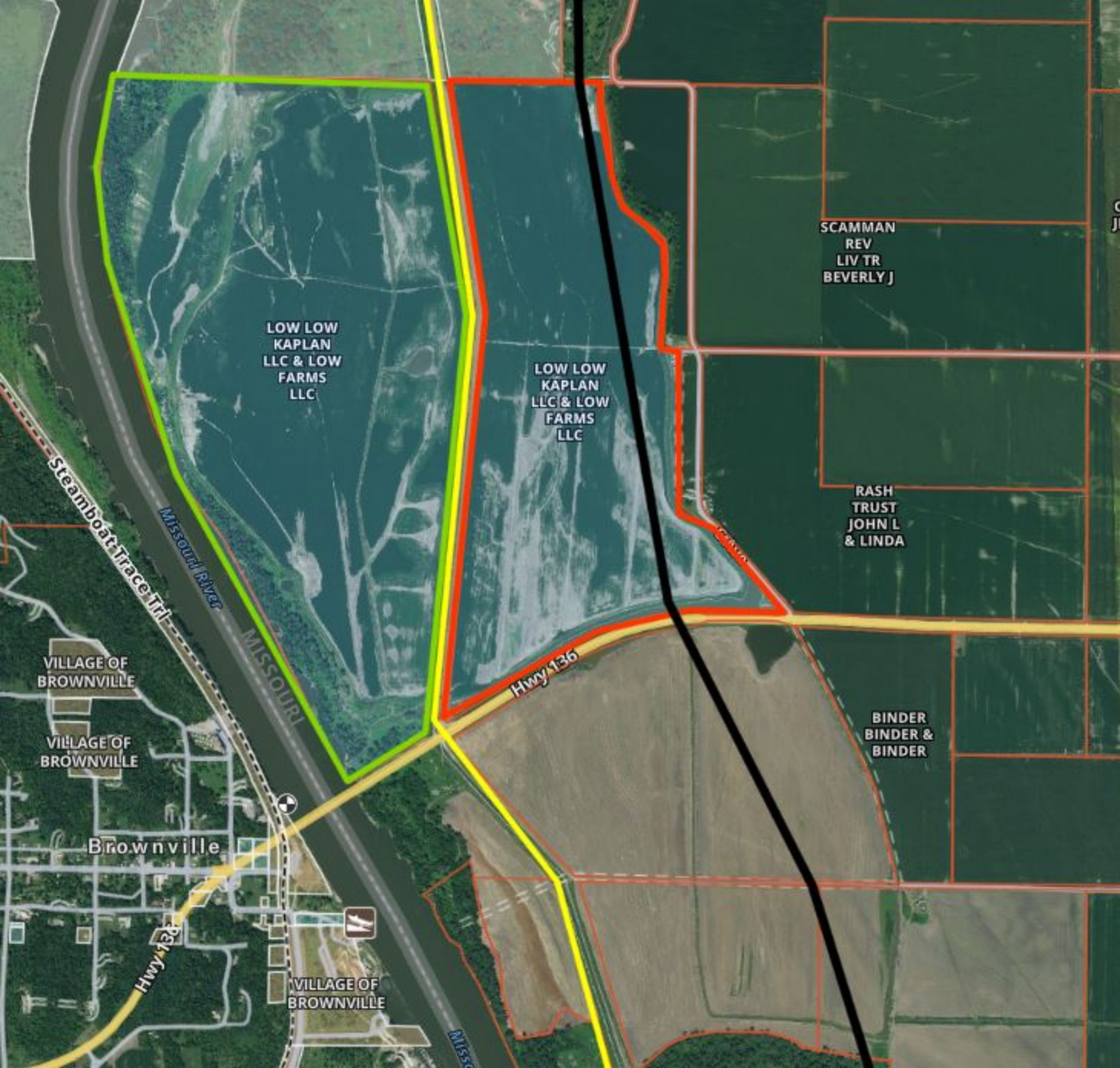
i

MO D

136

Phelps City

MO U



March 17, 2023

Congressman Sam Graves
1135 Longworth HOB
Washington, DC 20515
United States

Dear Congressman Graves:

I am writing to express my support for the Northwest Missouri Regional Council of Governments Community Funded Project request for the Mill Creek and Nishnabotna Drainage Districts Pump Relocation Project. The proposed project would add flood resiliency to the area, provide environmental benefits and reduce operation and maintenance costs for the districts.

Funding received for the project would allow both Mill Creek and Nishnabotna Drainage Districts to carry out the following:

- Replace three pumps damaged during the 2019 flood;
- Relocate the three pumps to new locations to provide better drainage of the watershed and remove water to the riverside of the new L-536 Partial Levee Setback;
- Install power lines to the drainage ditches 3, 5, and 7 in the drainage districts to power the new electric pumps; and
- To pay for engineering costs associated with schematic drawing and environmental review process necessary to obtain the required Section 408 permits from the U.S. Army Corps of Engineers.

This proposed project will allow the drainage districts to provide greater flood resiliency to citizens of Atchison and Holt Counties, protected by the L-536 Levee and the Mill Creek and Nishnabotna Drainage Districts. In addition, the drainage districts will also see reduced operation and maintenance costs by switching to electric pumps as energy costs will be reduced, pumps can be monitored remotely, and require less maintenance. The electric pumps will provide environmental benefits by reducing carbon emissions. The drainage districts will be able to provide increased safety to their board members and staff that currently must refuel the pumps during a flooding event.

It is for these reasons that Mill Creek and Nishnabotna Drainage Districts provide our endorsement for the Northwest Missouri Regional Council of Governments' Community Funded Project request.

Respectfully,



Bill Heitman
President
Mill Creek Drainage District